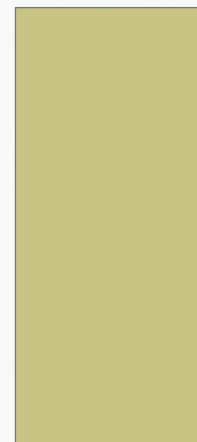


EMPLOYMENT FIRST  
2014

PROVIDER NEEDS SURVEY



# 28 RESPONDENTS

(RESPONSE AS OF MAY 7)

## Types of Respondents

Community Rehabilitation Providers  
Vocational Rehabilitation Counselors  
Emergency/Crisis Response Services  
Mental Health Providers  
Behavioral Services

## Population Served by Respondents

Individuals with mental illness and/or co-occurring mental health and substance use	20	13%
Individuals with sensory disabilities	18	11%
Individuals with physical disabilities	18	11%
Individuals with cognitive or intellectual disabilities	21	13%
Youth in transition	15	9%
Individuals with all types of disabilities	18	11%
Individuals with traumatic brain injury	15	9%
Individuals with autism	20	13%
Veterans	10	6%
Other	5	3%

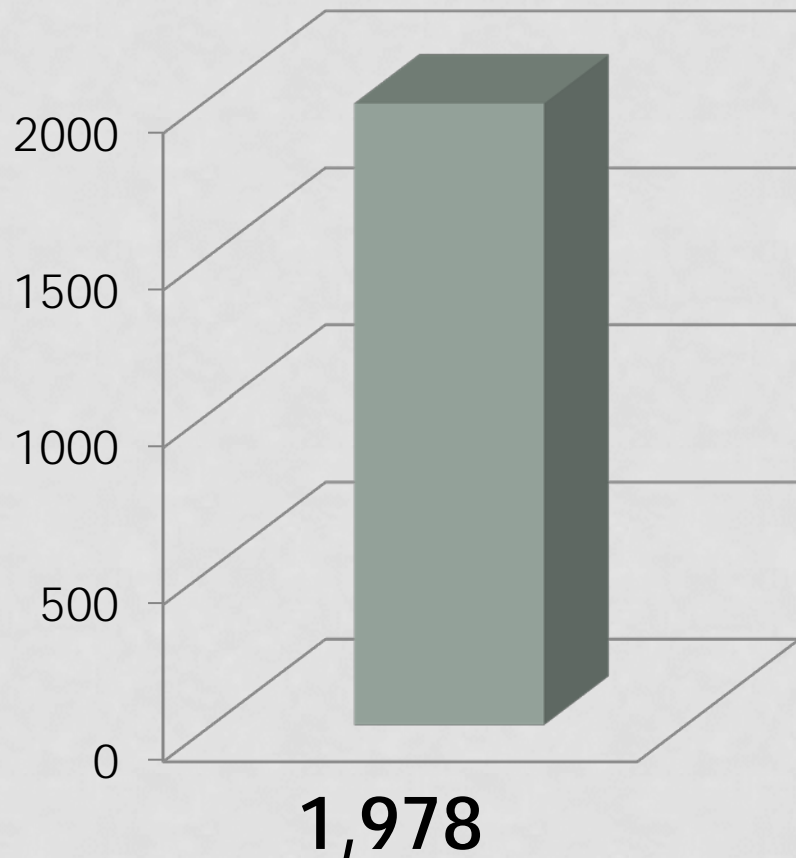
## Counties Served

Androscoggin	9	13%
Aroostook	4	6%
Cumberland	15	21%
Franklin	3	4%
Hancock	1	1%
Kennebec	4	6%
Knox	3	4%
Lincoln	3	4%
Oxford	5	7%
Penobscot	4	6%
Piscataquis	2	3%
Sagadahoc	5	7%
Somerset	2	3%
Waldo	2	3%
Washington	1	1%
York	9	13%

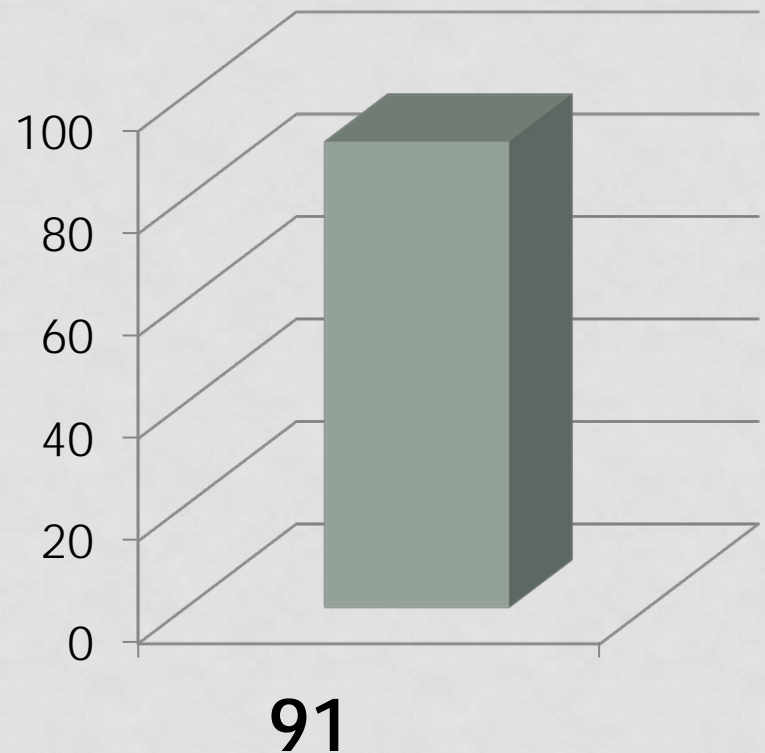
# Services Provided by Respondents

Total Number of Individuals Served In Each Area

## Individual Employment Supports in the Community

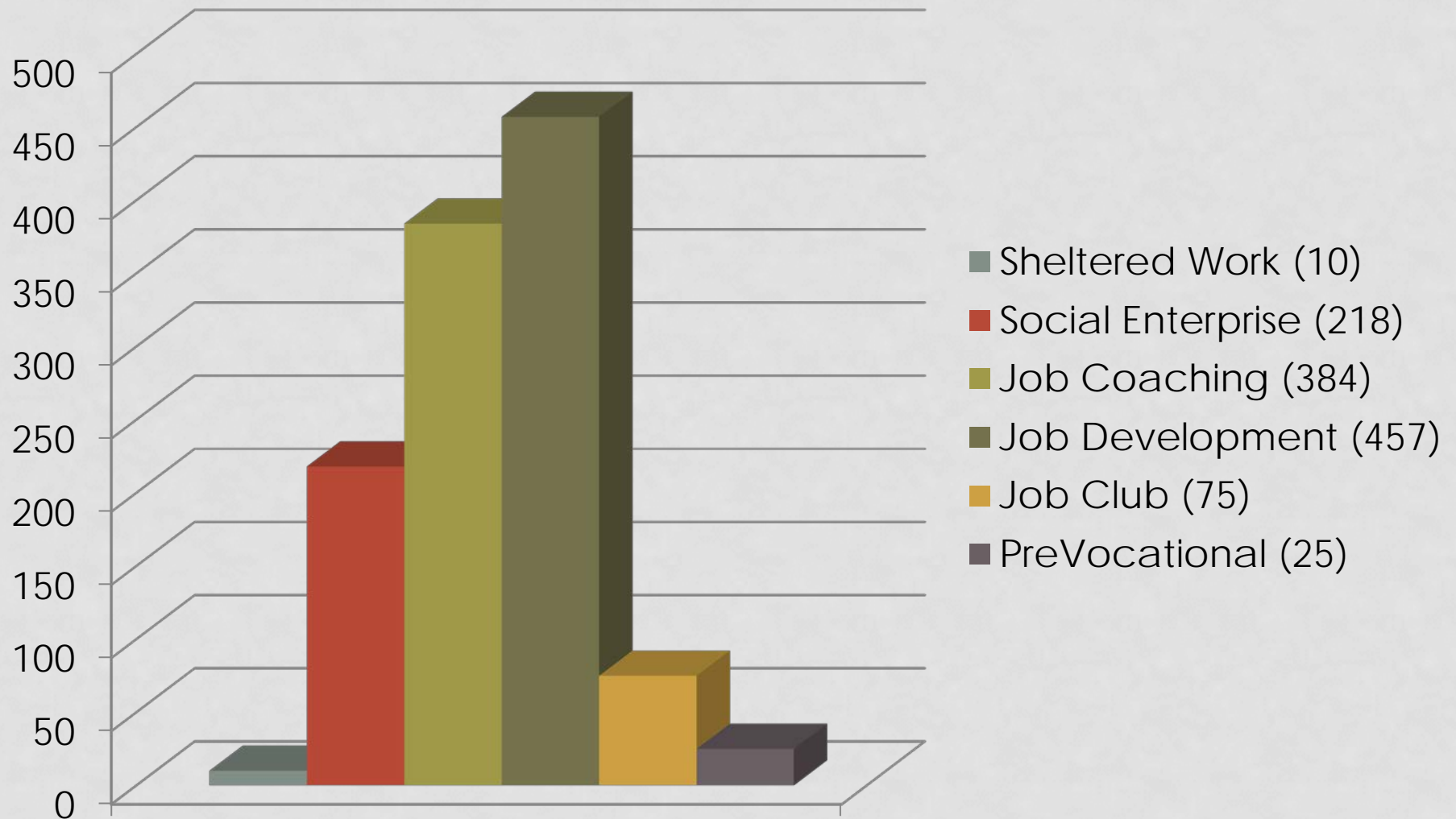


## Group Employment Supports in the Community



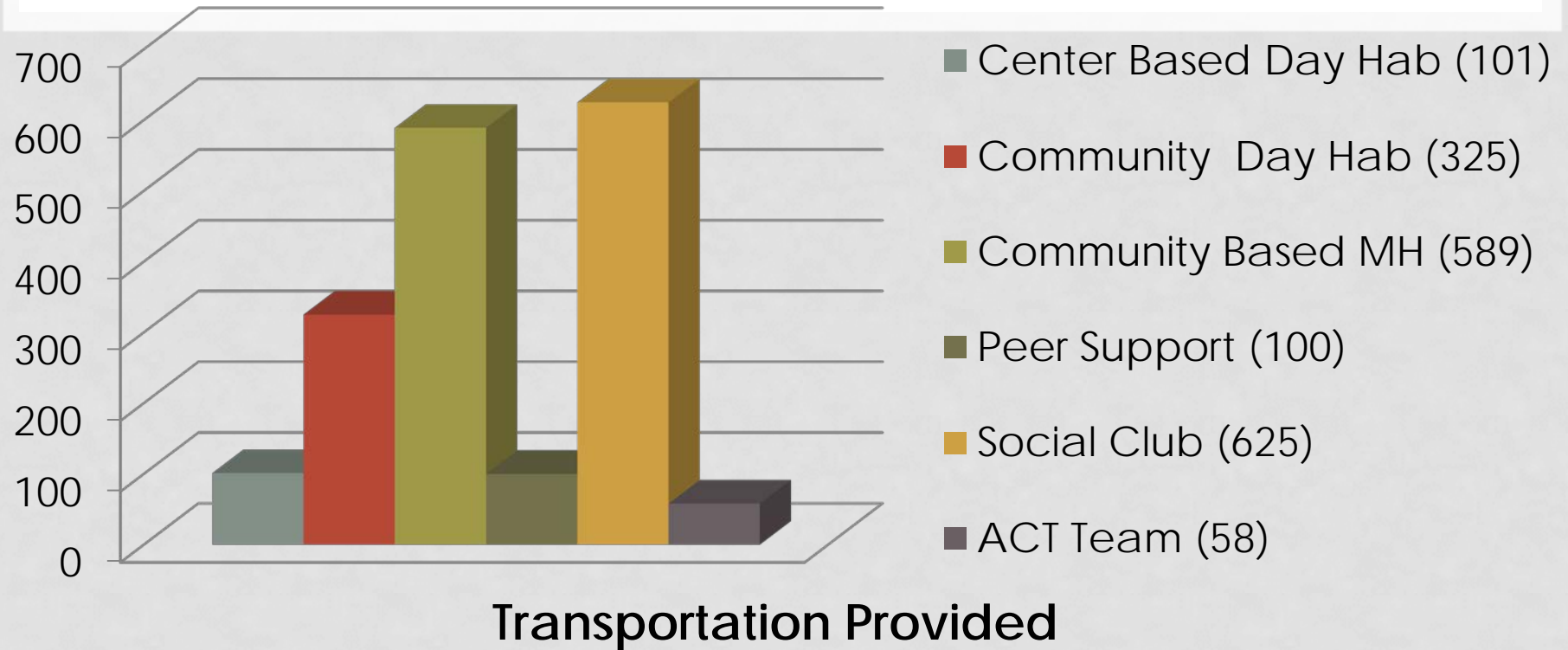
# Services Provided by Respondents

Total Number of Individuals Served In Each Area



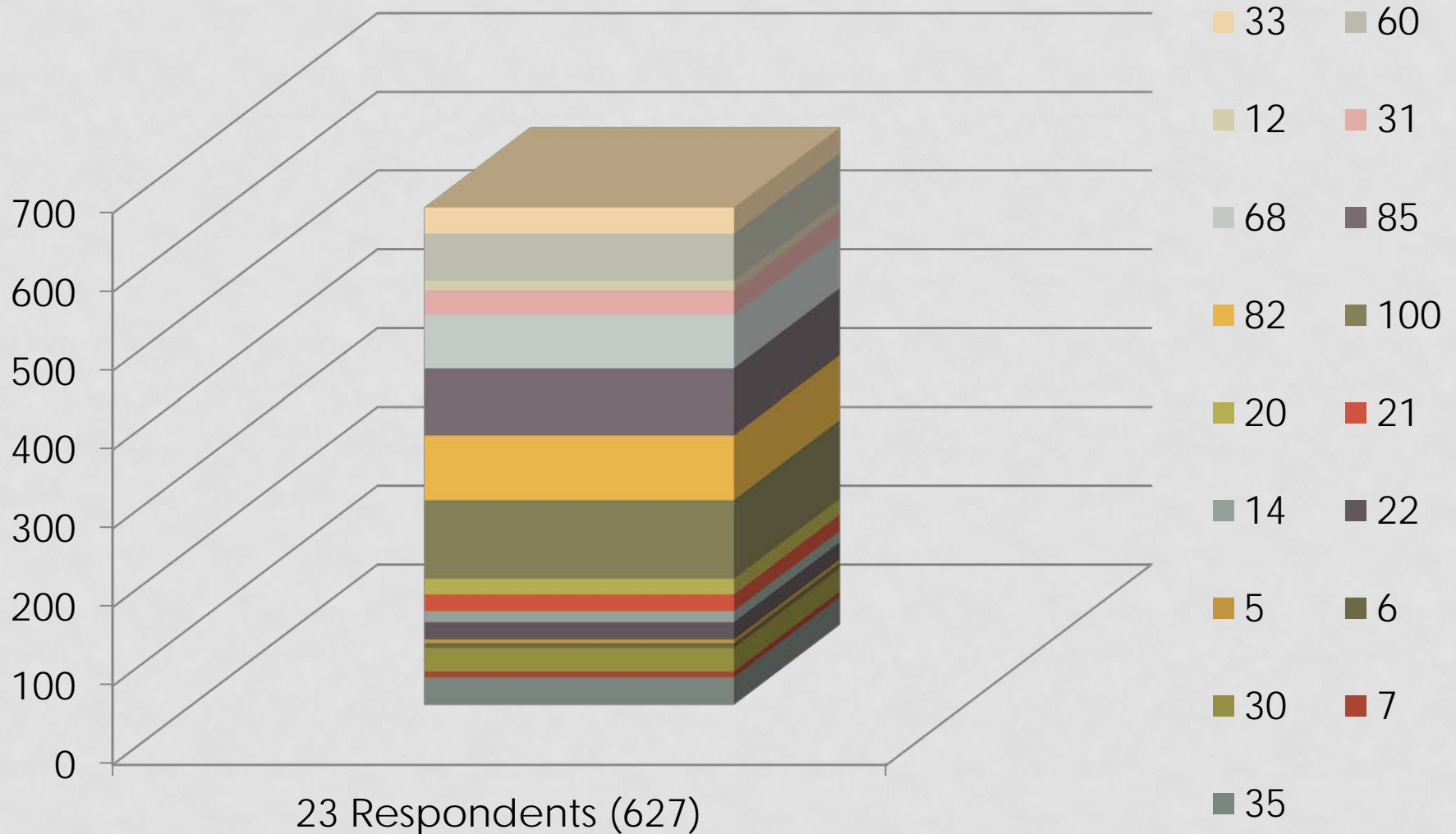
# Services Provided by Respondents

Total Number of Individuals Served In Each Area



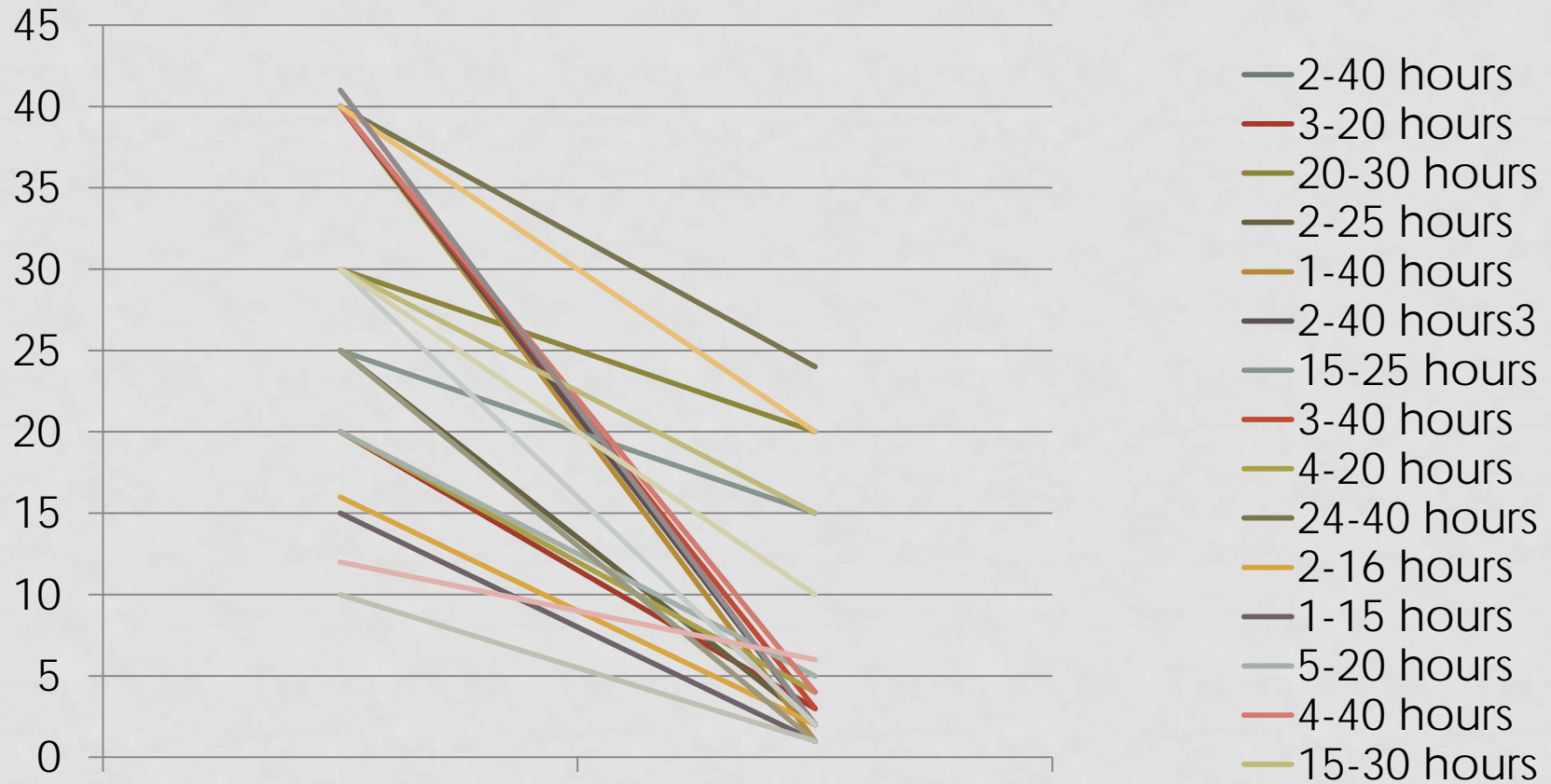
# Individuals Supported

Individual, Integrated, Community Based, or Customized Employment at or Above Minimum Wage



# Range of Hours Worked

Individual, Integrated, Community Based, or Customized Employment at or Above Minimum Wage

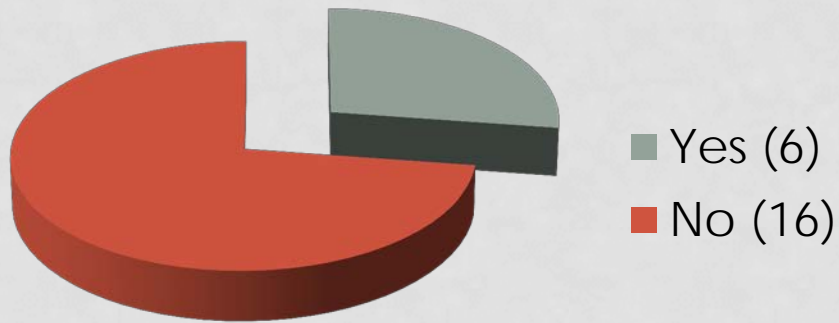


Average from 22 respondents: 7 – 29 per week

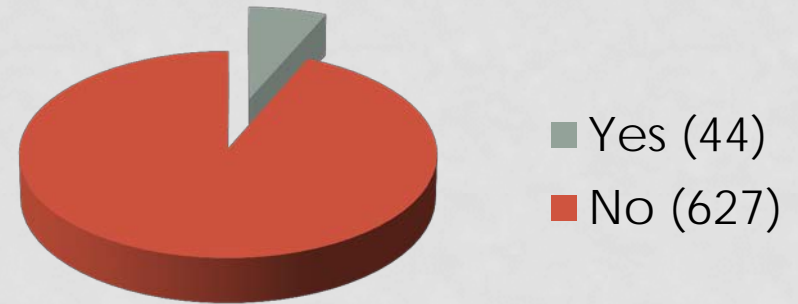


# 14(c) Certificates

Holders of 14 (c)Certificate



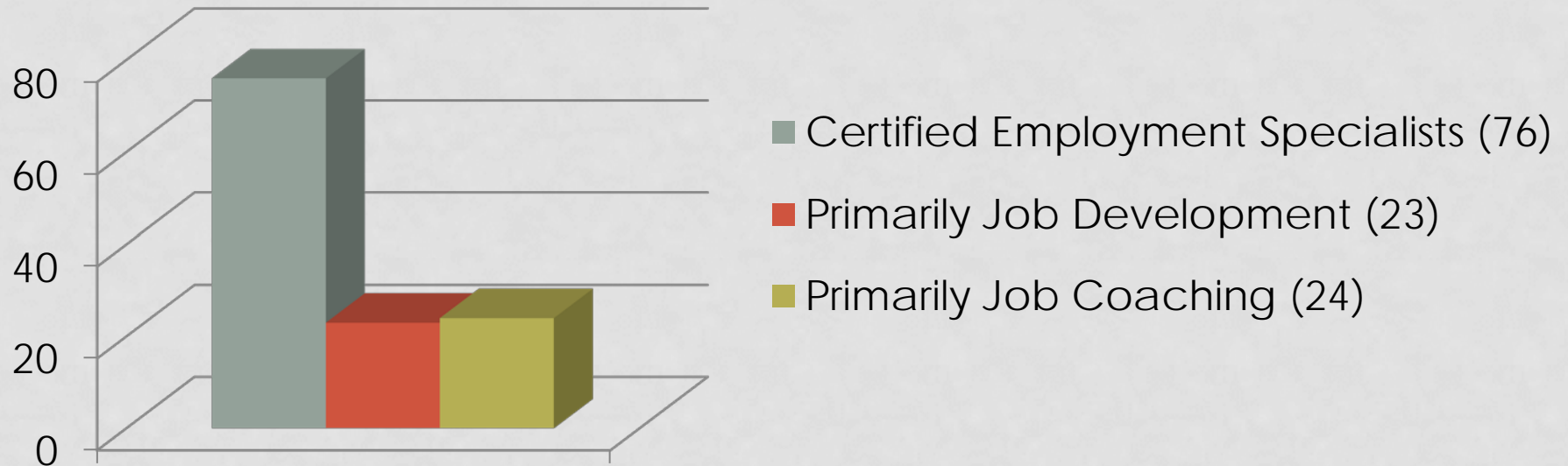
Working under a 14 (C)Certificate



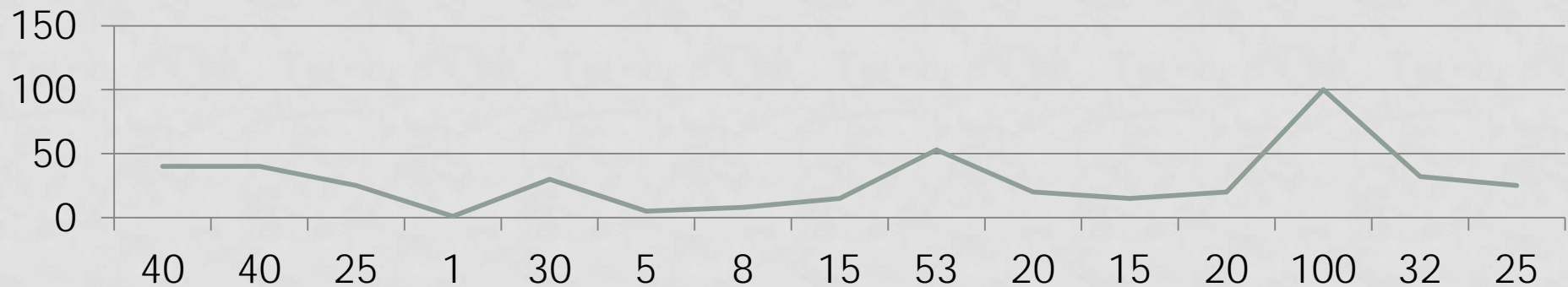


# Respondent Staff

Employment Specialists and Job Coaches

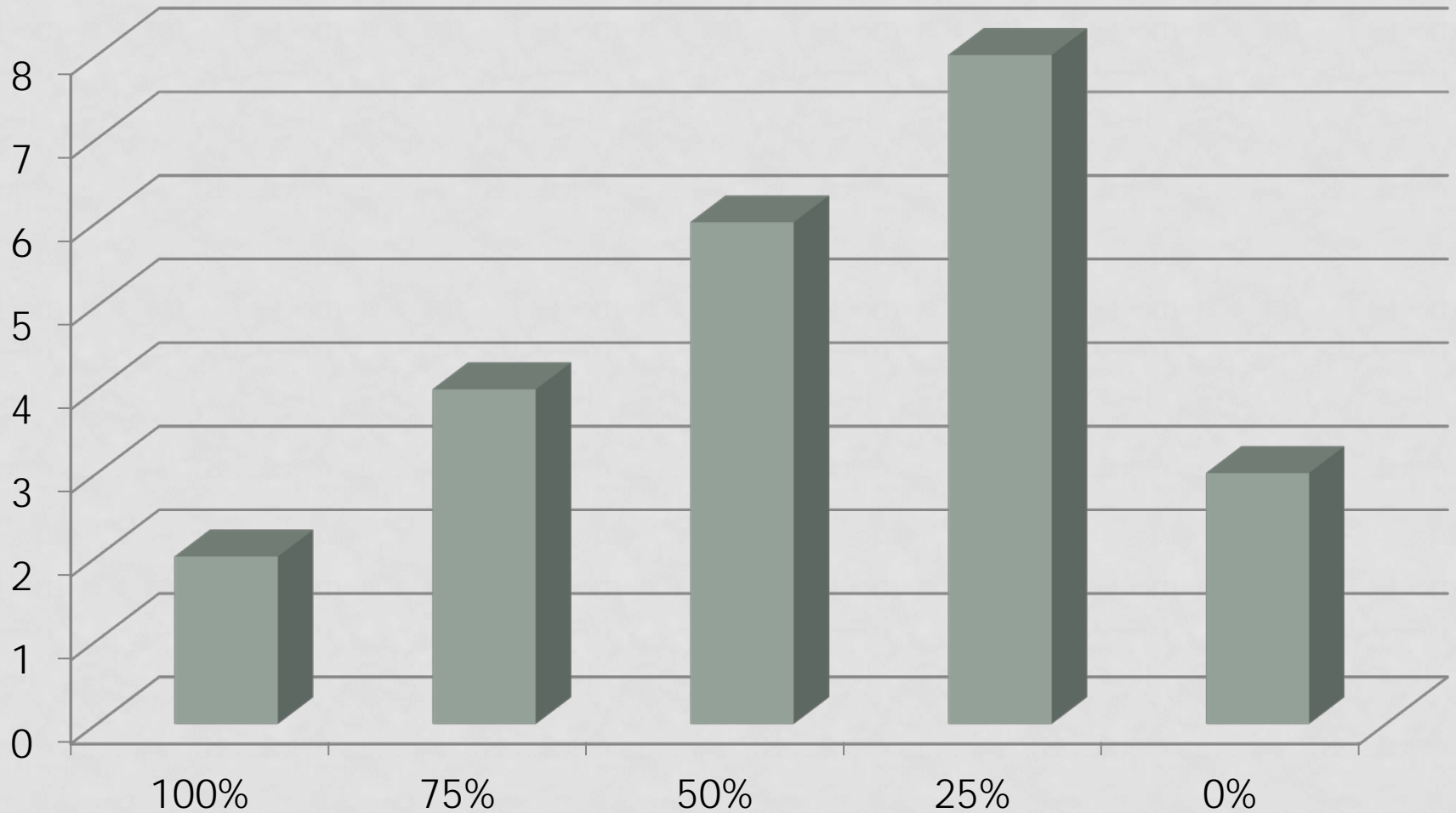


## Hours of Employment Services Provided Weekly



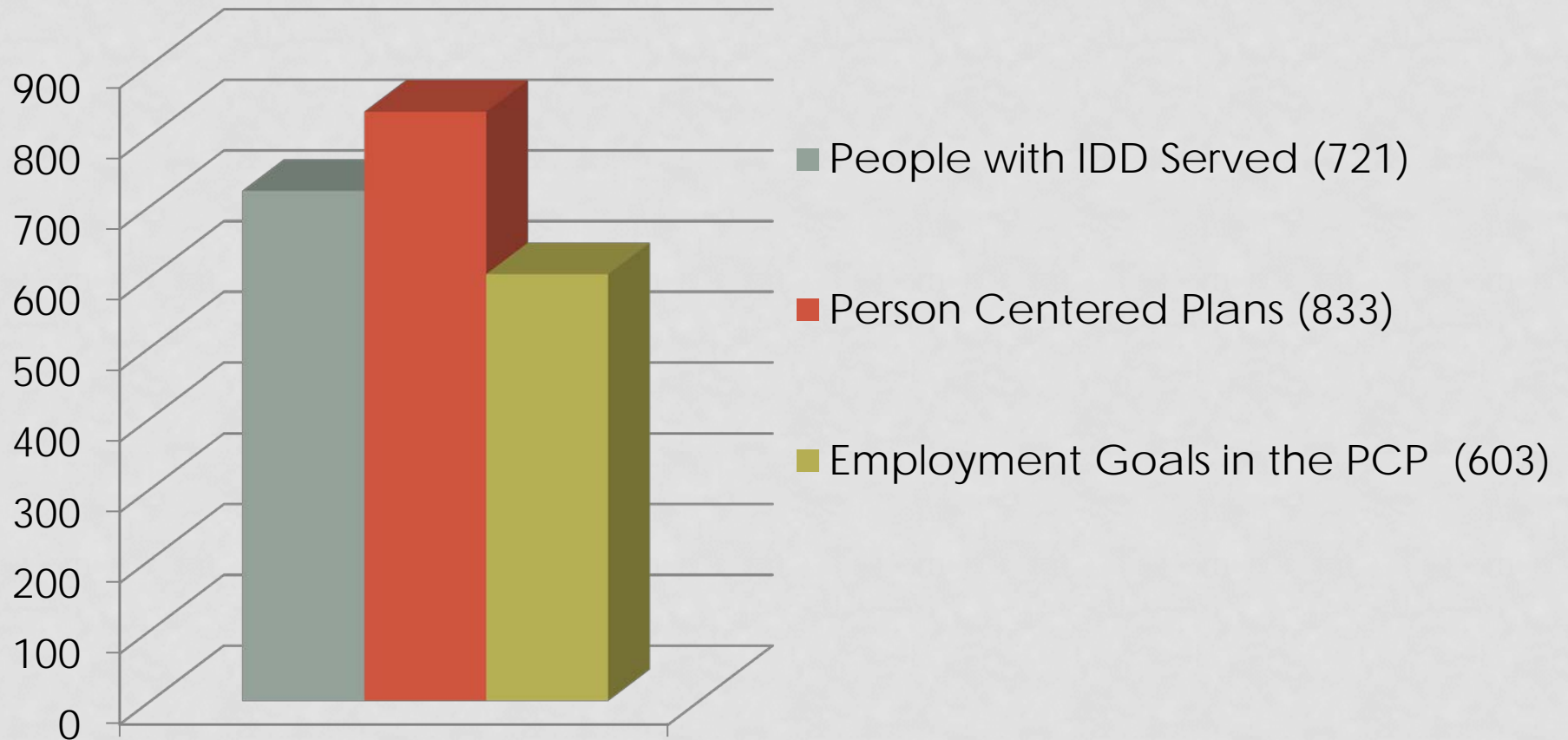
# Percentage of Paid Support

Employment Support Provided Within the Community



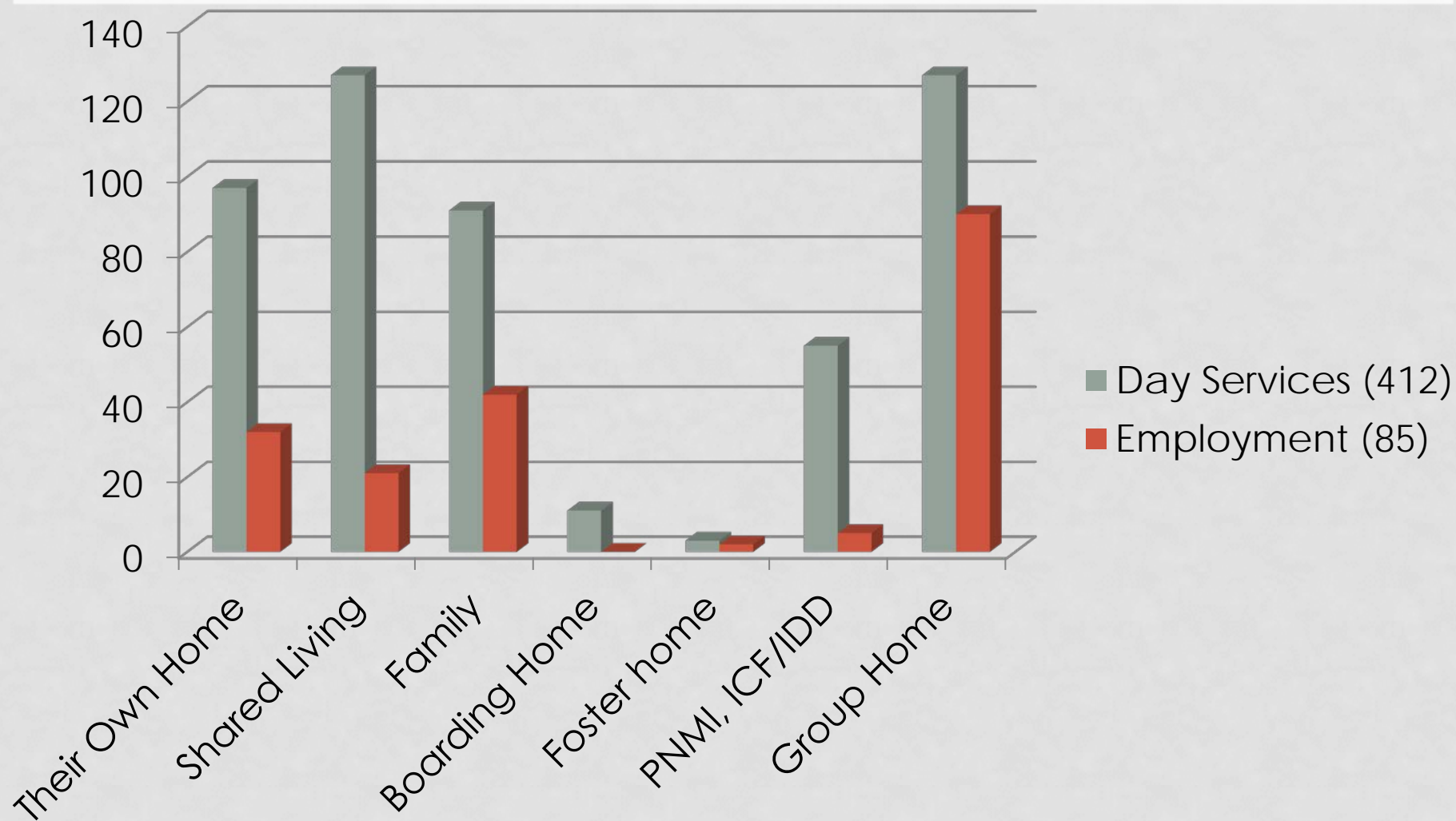
# Intellectual Disabilities

Questions for Agencies Supporting Individuals with Intellectual Disabilities



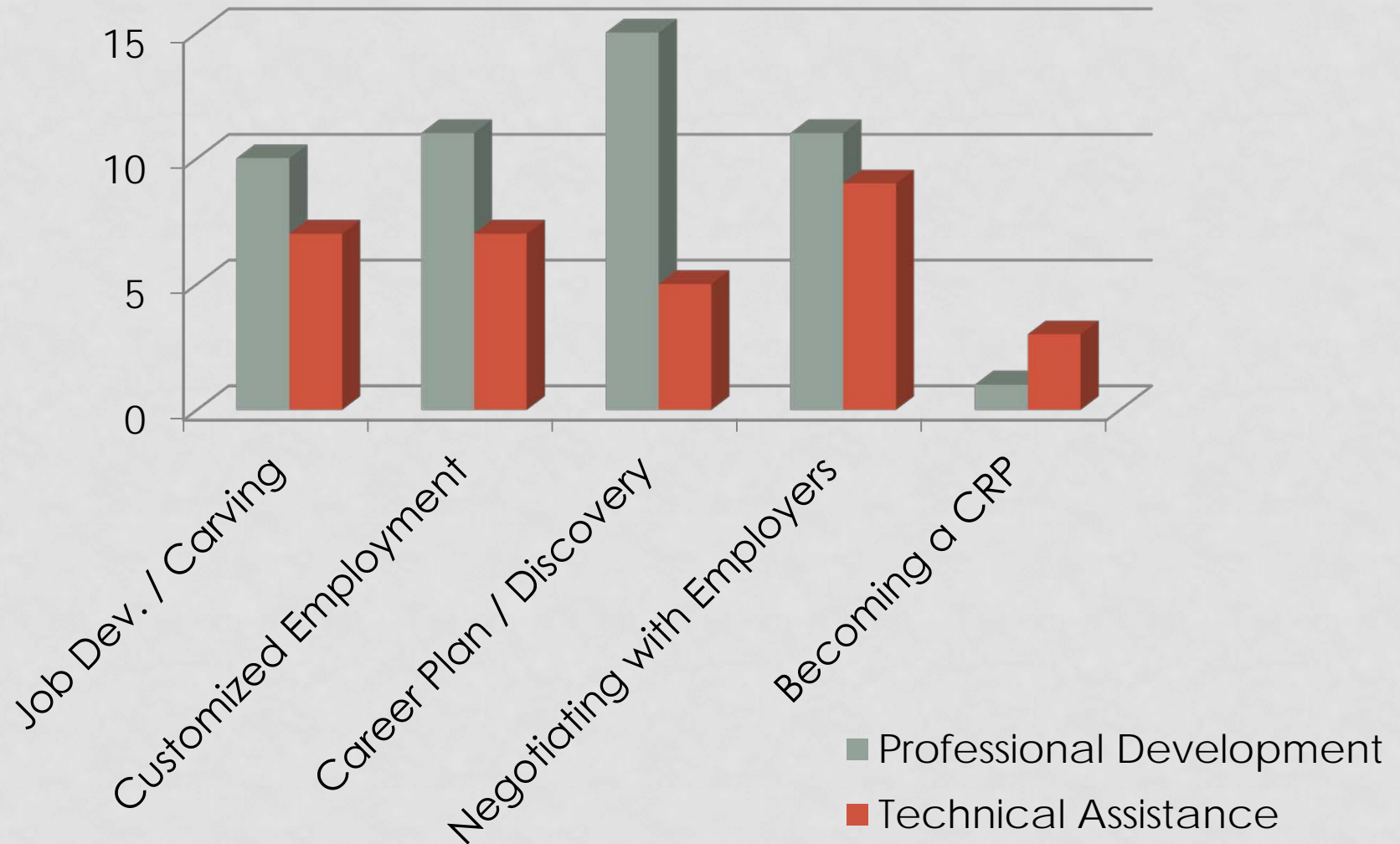
# Housing

Housing options of Individuals Attending Day Services vs. Employment



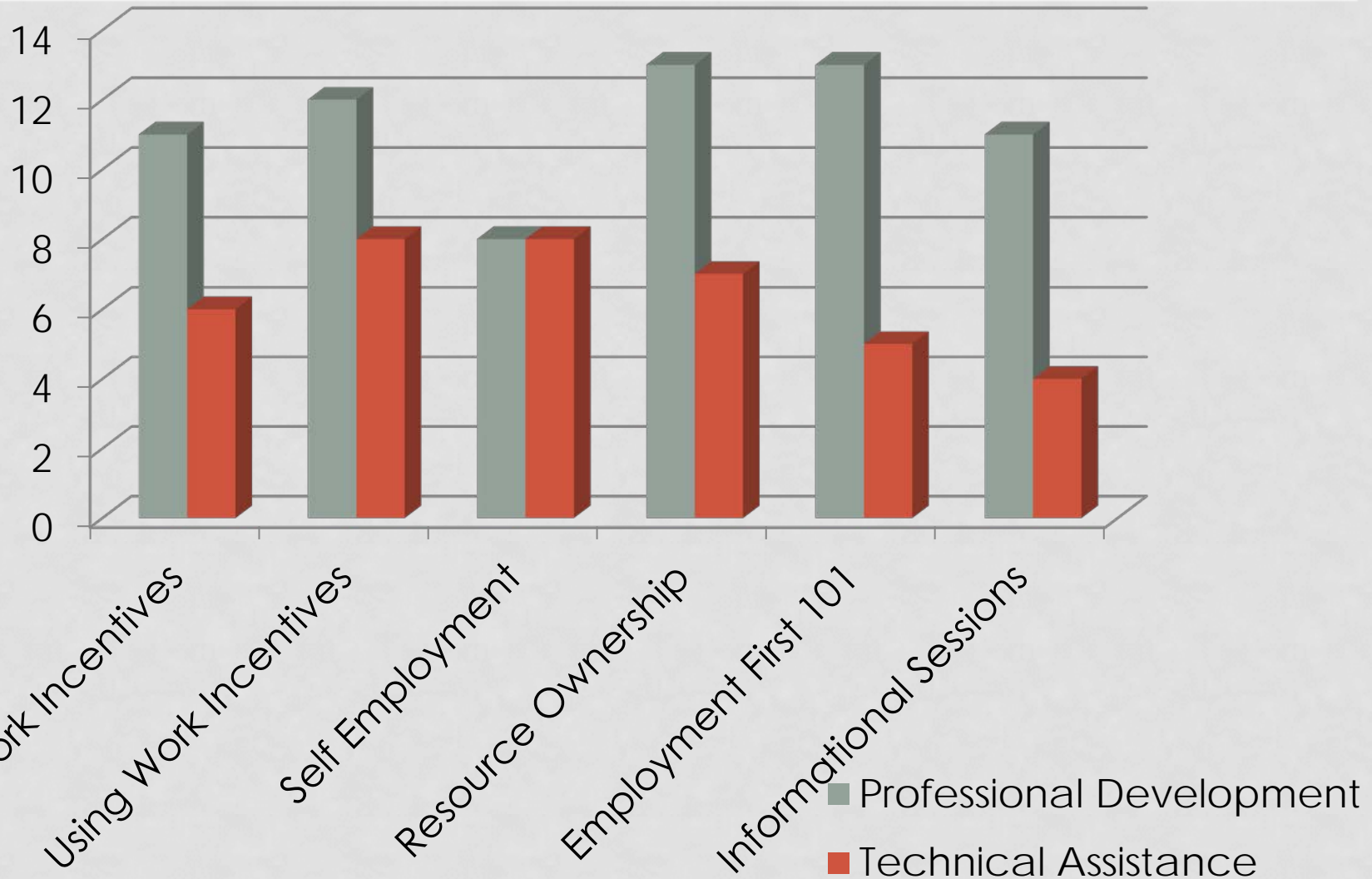
# Implementing Employment First

Support That will be Needed by Agencies to Effectively Implement Employment First



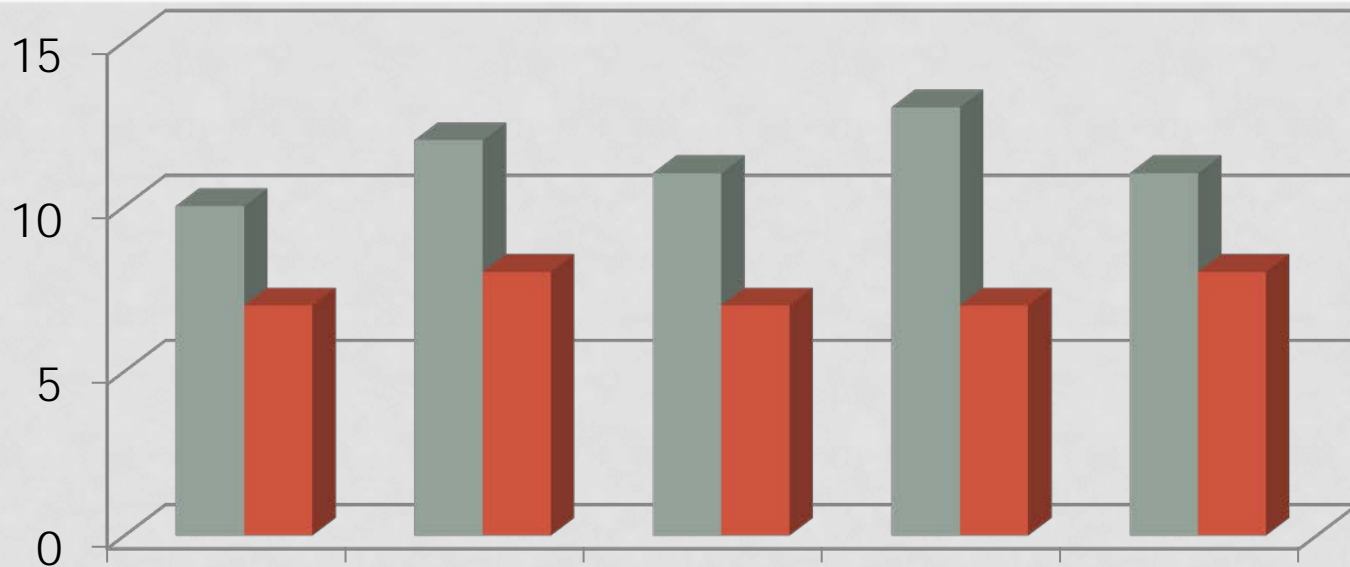
# Implementing Employment First

Support That will be Needed by Agencies to Effectively Implement Employment First



# Implementing Employment First

Support That will be Needed by Agencies to Effectively Implement Employment First



Changing Agency Culture

Braided Funding

Financial Planning

Whole Life Supports

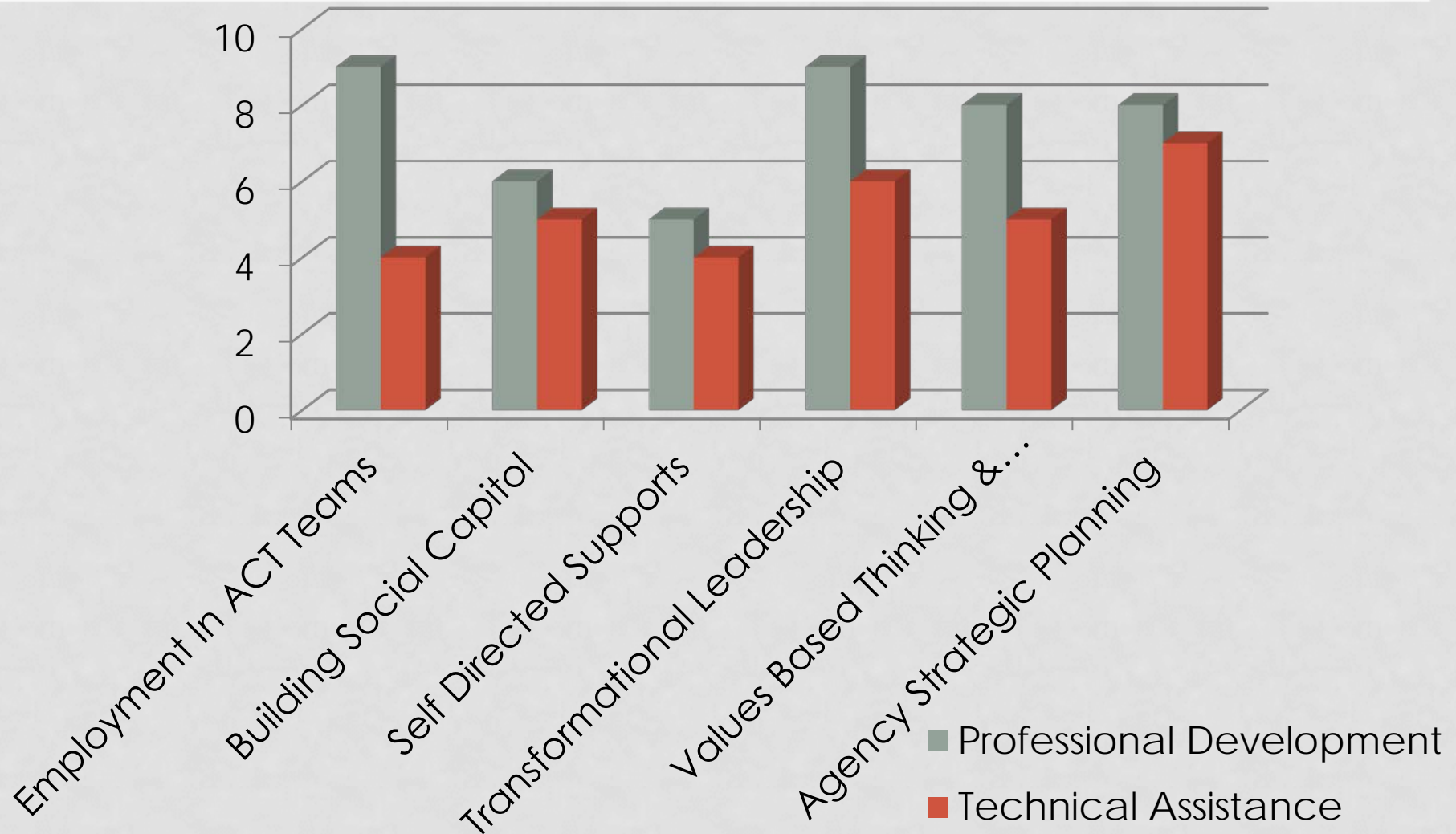
Individual Placement &...

Professional Development  
Technical Assistance



# Implementing Employment First

Support That will be Needed by Agencies to Effectively Implement Employment First



# Implementing Employment First

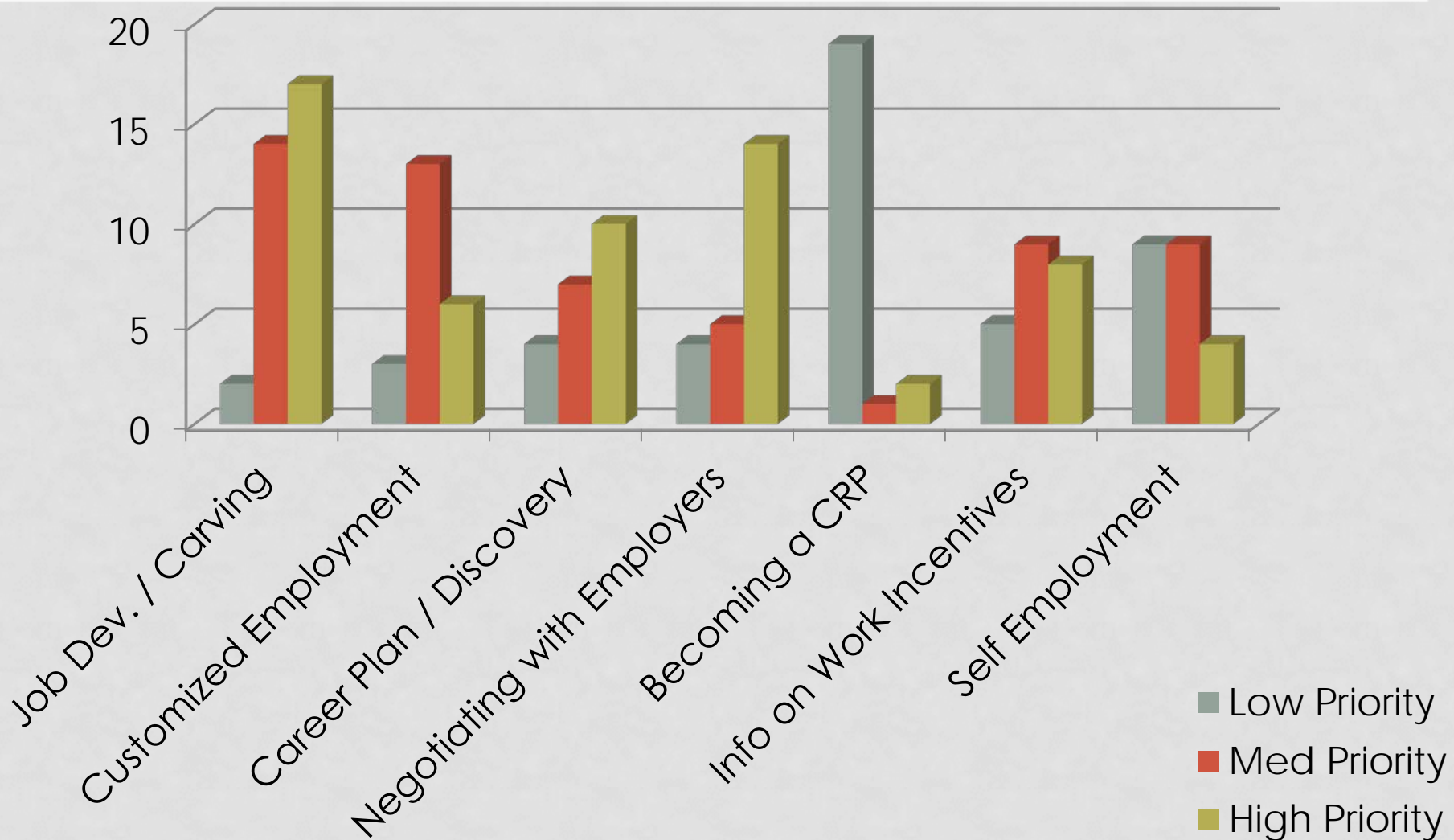
Support That will be Needed by Agencies to Effectively Implement Employment First

## Other Topics Of Interest or Need

- Certifications (CARF)
- Resource Ownership
- Funding
- Education for Case Managers and Other Service Providers
- Changing Attitudes of Providers to Benefit Consumers
- More input from Substance Abuse Providers
- More information for individuals with TBI
- Examples of successful agencies and their practices

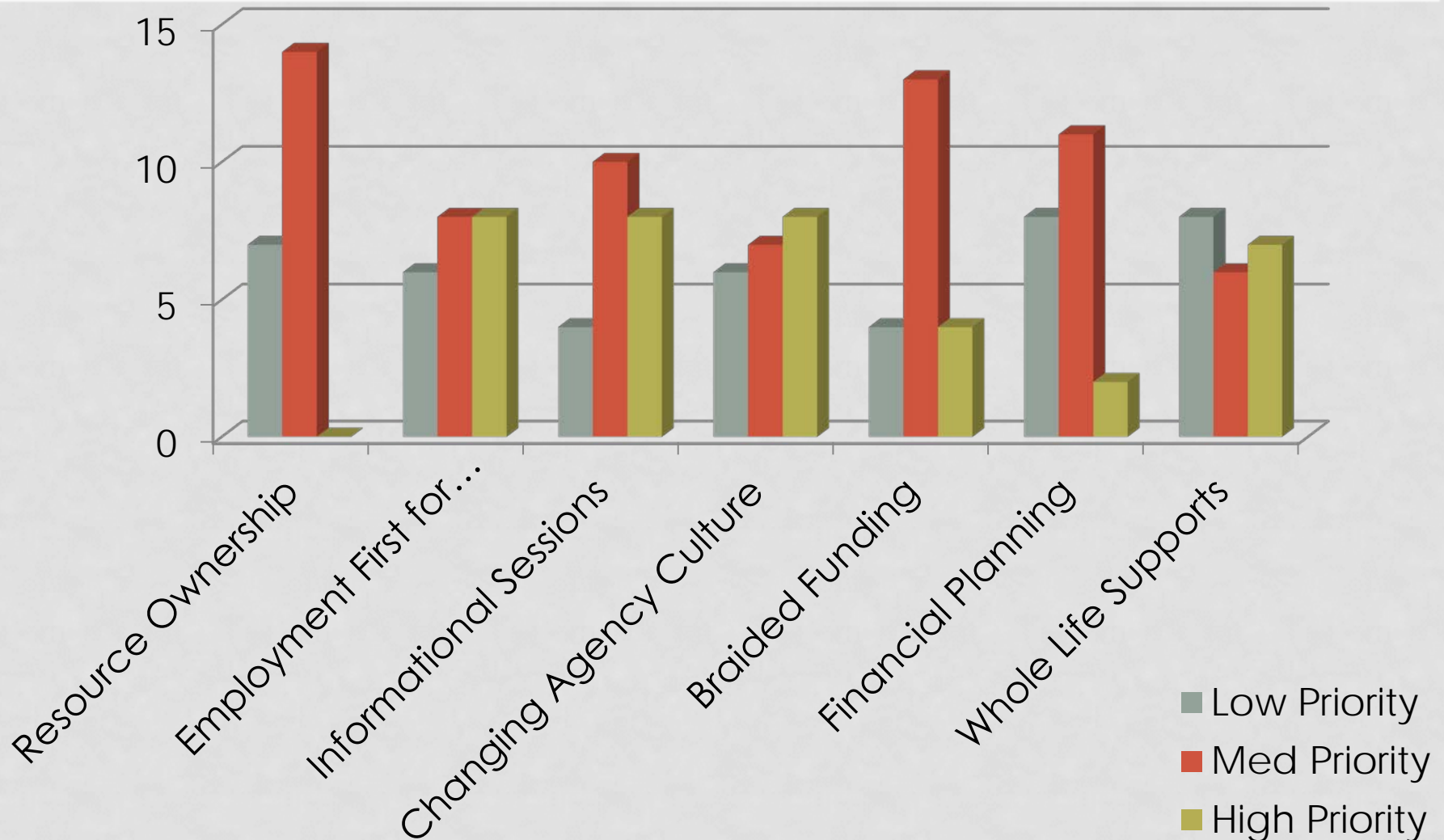
# Implementing Employment First

Agency Priority for Support Requested



# Implementing Employment First

Agency Priority for Support Requested



# Implementing Employment First

Agency Priority for Support Requested

